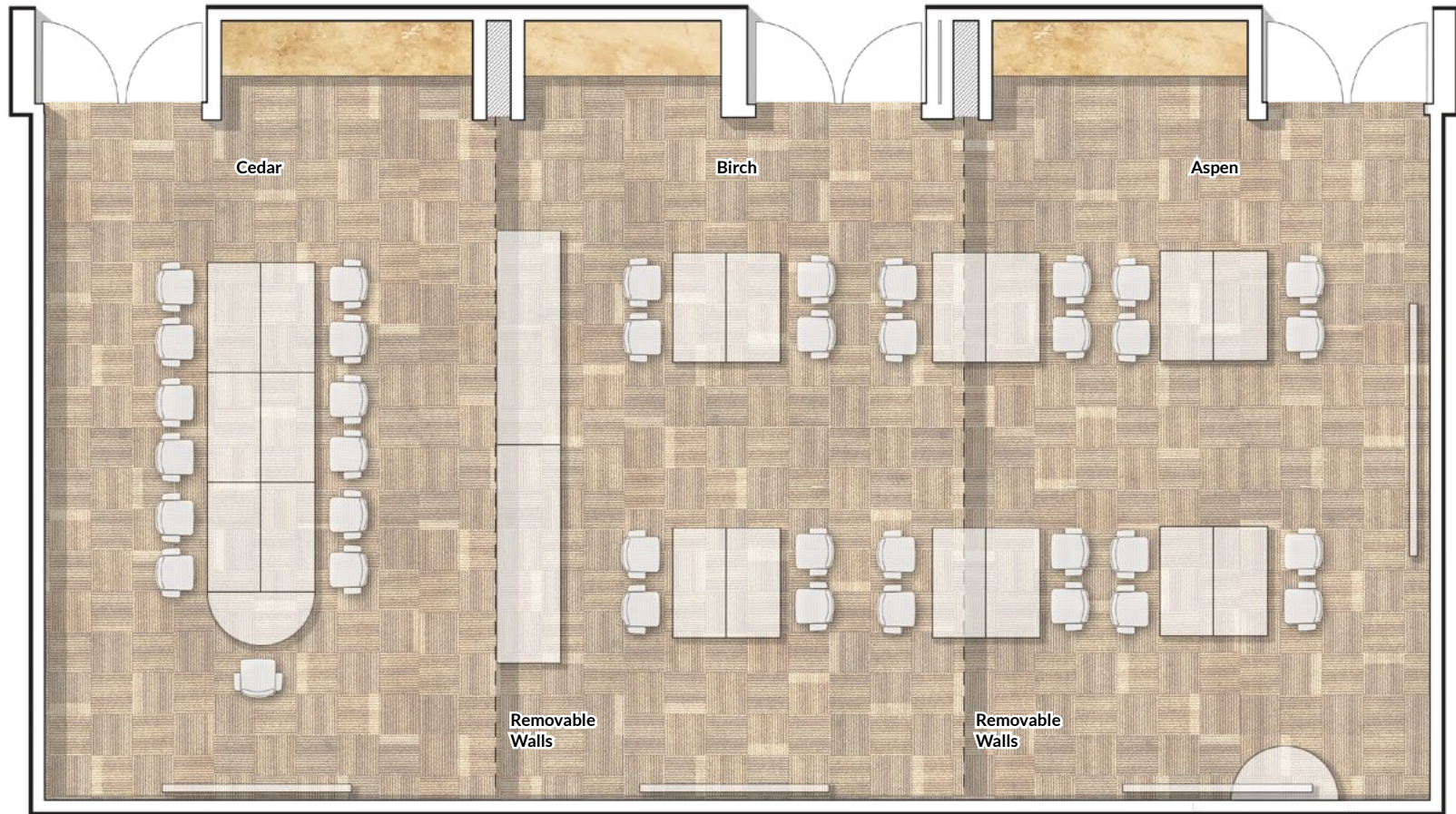
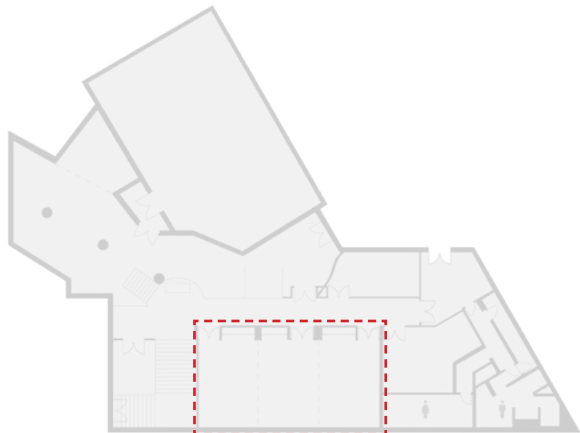






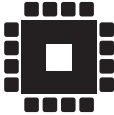




Meeting Rooms



**Example desk configuration only. More variations available. Please refer to Page 3 for detailed capacities.



Capacities

ROOM	 Theatre	 Classroom	 Boardroom	 U-shape	 Hollow Square	 Reception	 Dimensions	 Area	 Ceiling Height
aspen (a)	24	12	14	14	16	-	7m x 4.9m 23' x 16'	34m ² 368 sq ft	3m 10'
birch (b)	24	12	14	14	16	-	7m x 4.9m 23' x 16'	34m ² 368 sq ft	3m 10'
cedar (c)	24	12	12	14	16	-	7m x 4.9m 23' x 16'	34m ² 368 sq ft	3m 10'
a+b	50-60	24	22	24	28	-	7m x 9.8m 23' x 32'	68m ² 736 sq ft	3m 10'
a+b+c	80-90	36	-	36	36	-	7m x 14.7m 23' x 48'	103m ² 1,104 sq ft	3m 10'
Maple Leaf Cinema	140	-	-	-	-	-		151m ² 1,631 sq ft	3.35m 11'
Maple Leaf Cinema Reception Area	-	-	-	-	-	120		80m ² 856 sq ft	3m 10'

**Please ask us about our other unique and versatile venues including, LookOut, 360 Restaurant, and a full building rental.